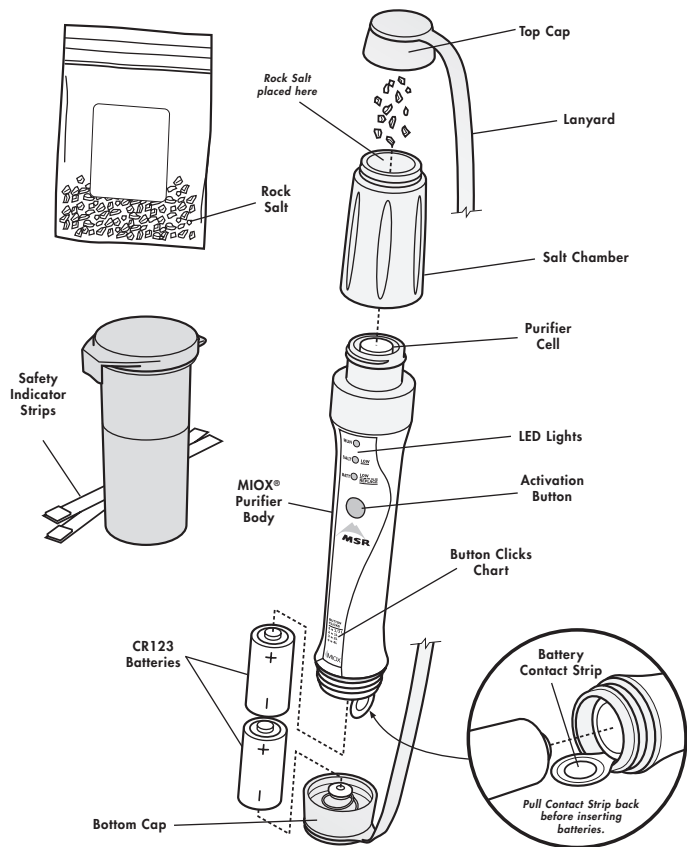


KNOW YOUR MIOX® PURIFIER

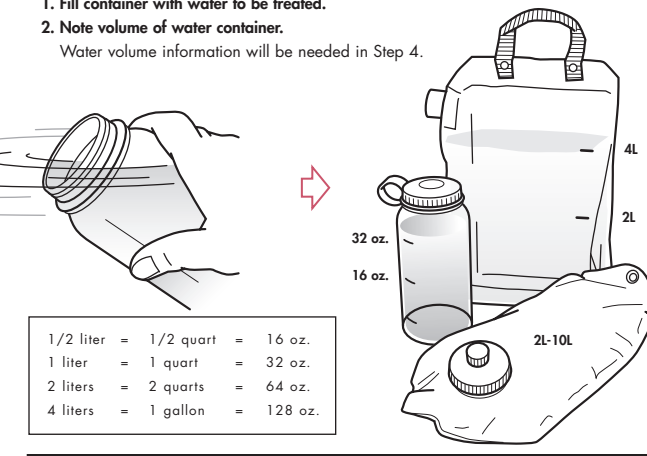


MIOX OPERATING INSTRUCTIONS

READ, UNDERSTAND, AND FOLLOW ALL instructions and warnings in this manual before using this purifier.

1 COLLECT WATER

1. Fill container with water to be treated.
2. Note volume of water container.
Water volume information will be needed in Step 4.



1/2 liter	= 1/2 quart	= 16 oz.
1 liter	= 1 quart	= 32 oz.
2 liters	= 2 quarts	= 64 oz.
4 liters	= 1 gallon	= 128 oz.

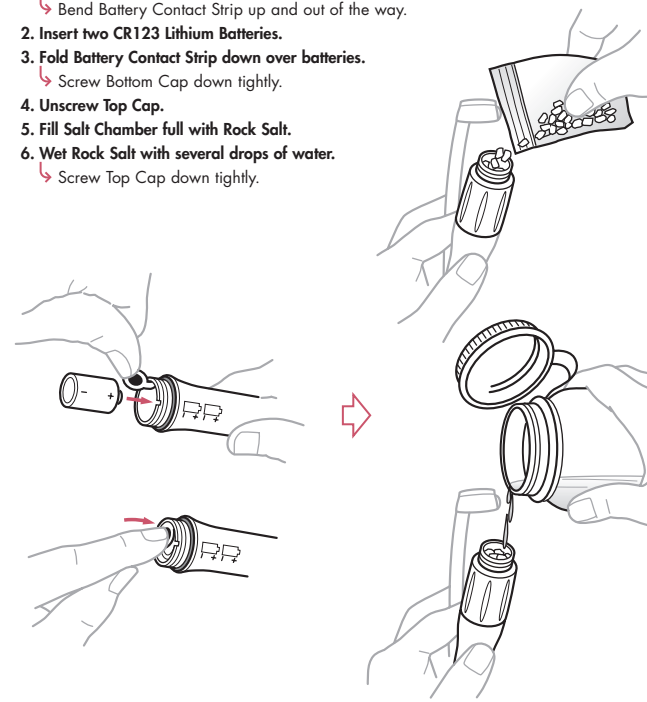
⚠ WARNING

Do not use seawater. MIOX does not make drinkable water out of salty or brackish water. Choose cleanest water available. Avoid water sources with high levels of chemical contamination, such as mining tailing ponds and sources near large agricultural operations. MIOX does not effectively reduce heavy metals or high levels of chemical contamination. Know how to effectively use this product to create clean, drinkable water.

2 PREPARE PURIFIER

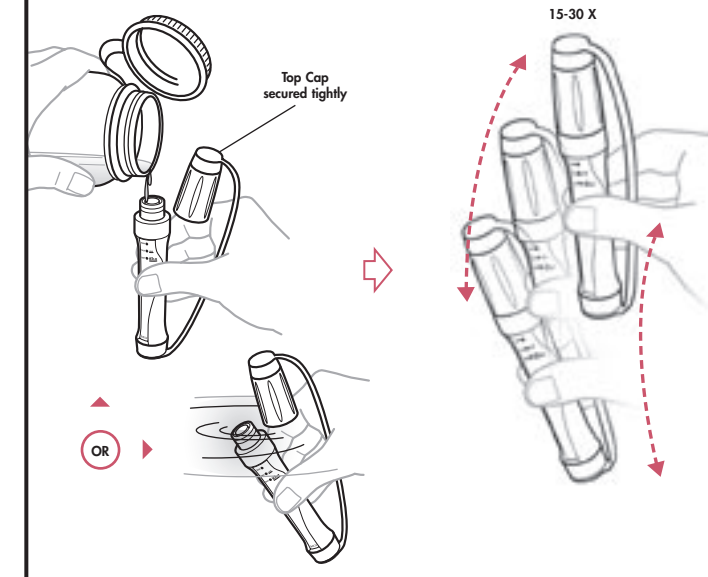
Step 2 may be done at home before use in the field.

1. Unscrew Bottom Cap.
↳ Bend Battery Contact Strip up and out of the way.
2. Insert two CR123 Lithium Batteries.
↳ Screw Bottom Cap down tightly.
3. Fold Battery Contact Strip down over batteries.
4. Unscrew Top Cap.
5. Fill Salt Chamber full with Rock Salt.
6. Wet Rock Salt with several drops of water.
↳ Screw Top Cap down tightly.



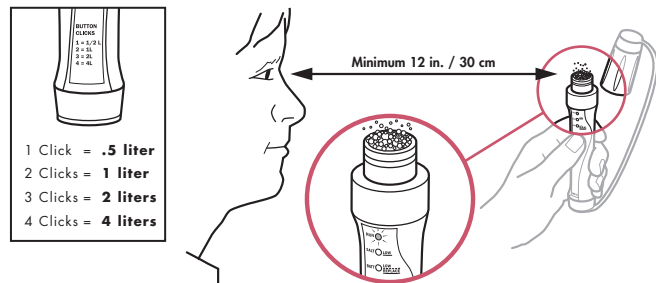
3 MAKE SALT SOLUTION

1. Unscrew Salt Chamber.
2. Fill Purifier Cell full with several drops of water.
3. Screw down Salt Chamber tightly.
4. Vigorously shake purifier (about 15-30 times).



4 ACTIVATE SALT SOLUTION

1. Hold purifier upright.
2. Remove Salt Chamber.
Purifier Cell should be at least 3/4 full of Salt Solution.
3. Find the Button Clicks table on bottom face of purifier.
Note the appropriate number of clicks to liters (L).
4. Watch LED Panel and press the Activation Button (1, 2, 3, or 4 clicks).
Green LED RUN light will be on while solution in Purifier Cell bubbles.
Green LED RUN Light will turn off when solution is ready to use.
If other lights occur, see Troubleshooting panel on back.



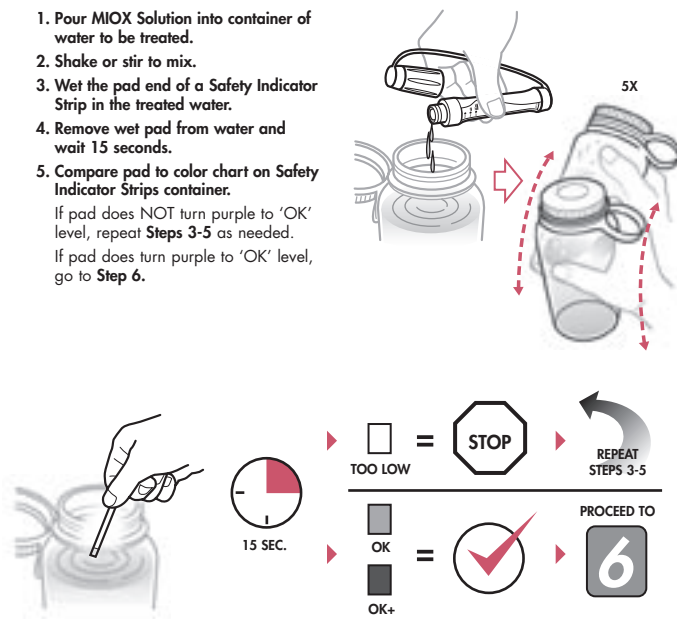
- 1 Click = .5 liter
- 2 Clicks = 1 liter
- 3 Clicks = 2 liters
- 4 Clicks = 4 liters

⚠ WARNING

Do not touch your eyes while using the purifier. MIOX creates a chemical oxidant that can damage your eyes. The same oxidant can also irritate skin and permanently stain clothing. Keep at least 12 inches (30 cm) away from your face and clothing during Step 4. Rinse purifier and hands after use.
Also, see First Aid.

5 TREAT AND TEST WATER

1. Pour MIOX Solution into container of water to be treated.
2. Shake or stir to mix.
3. Wet the pad end of a Safety Indicator Strip in the treated water.
4. Remove wet pad from water and wait 15 seconds.
5. Compare pad to color chart on Safety Indicator Strips container.
If pad does NOT turn purple to 'OK' level, repeat Steps 3-5 as needed.
If pad does turn purple to 'OK' level, go to Step 6.



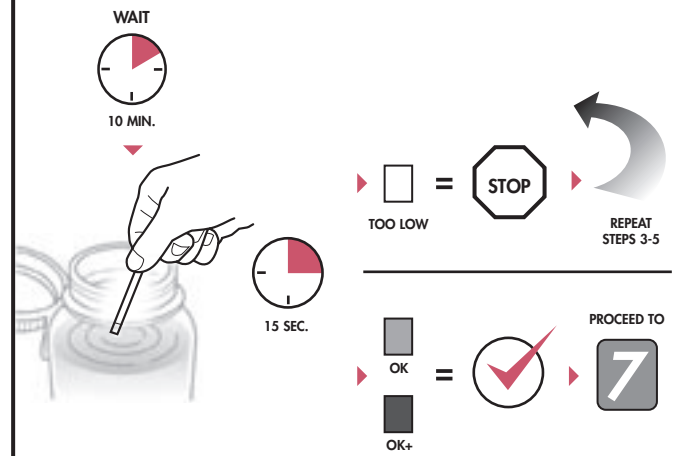
	TOO LOW	=		↳ REPEAT STEPS 3-5
	OK	=		↳ PROCEED TO 6
	OK+	=		↳ PROCEED TO 6

⚠ WARNING

Do not wait more than 15 seconds to read the strip or the color may fade. Do not reuse the test strips if they have turned purple.

6 CONTINUE TREATMENT TEST

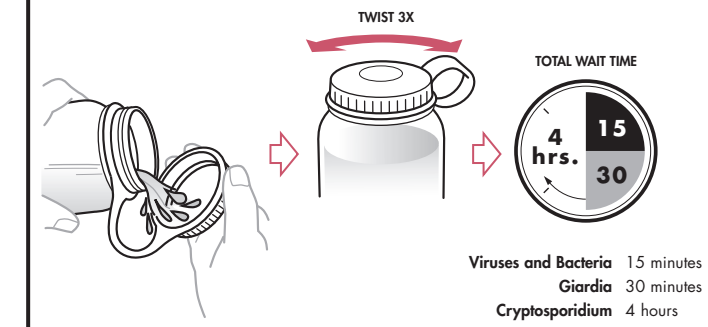
1. Wait 10 minutes.
2. Wet the pad end of a second Safety Indicator Strip in the treated water.
3. Remove wet pad from water and wait 15 seconds.
4. Compare second pad to color chart on Safety Indicator Strips container.
If pad does NOT turn purple to 'OK' level, repeat Steps 3-5 as needed.
If pad does turn purple to 'OK' level, go to Step 7.



	TOO LOW	=		↳ REPEAT STEPS 3-5
	OK	=		↳ PROCEED TO 7
	OK+	=		↳ PROCEED TO 7

7 FINISH TREATMENT

1. Pour some treated water onto cap threads.
2. Close cap and twist back and forth 3 times.
3. Wait the remaining appropriate treatment time.



Viruses and Bacteria	15 minutes
Giardia	30 minutes
Cryptosporidium	4 hours

⚠ WARNING

Wait the full appropriate treatment time. Do not add more water to the container after the treatment process. Adding water after this step will dilute the strength of the treatment solution and increase the risk of contamination. Do not add drink mixes to treated water before treatment time is complete or treatment process may stop. To prevent drinking any contaminated water, the threads on the container and the cap must be rinsed with treated water.