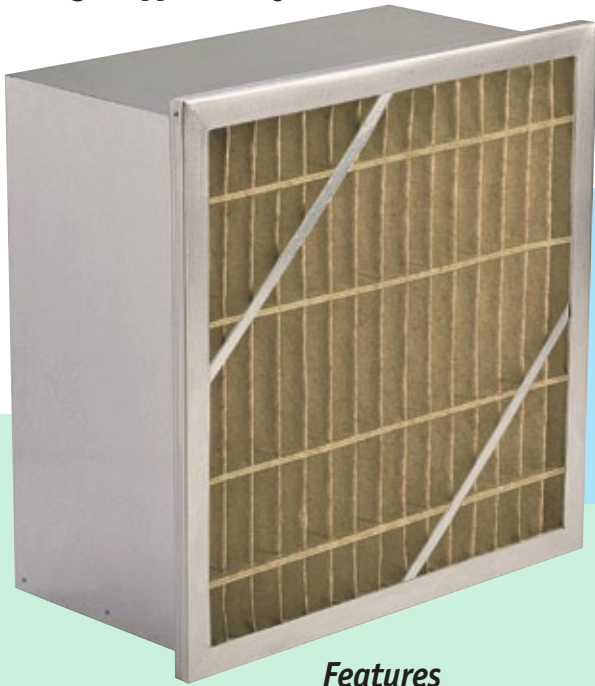




Koch Filter Corporation
Filtration Products Crafted with Pride

DuraKleen™

High Efficiency Gas Phase Filter



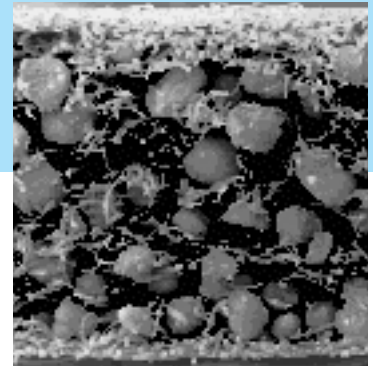
Features

- Removes VOC's (volatile organic compounds), chemical and contaminants
- Small mesh size carbon for high efficiency
- Uses Celbond Particulate Structure (CPS) Technology
- More odor catching surface area with less weight
- Low pressure drop
- Virtually no dusting
- Excellent polishing filter for high contaminant concentrations

The DuraKleen gas phase adsorber offers superior performance in gas and odor applications where ultra high efficiencies are required. More and more facility and process engineers are becoming sensitive to removing low levels of gases known as Airborne Molecular Contamination (AMC), which are typically 1 part per million (ppm) and less. The DuraKleen removes these low level gases to help provide acceptable levels of indoor air quality for manufacturing processes, museums, hospitals, commercial office buildings, cleanrooms, and many others.

The filter media uses the Celbond Particulate Structure (CPS) technology, which suspends activated carbon in a uniform distribution throughout a tightly bonded three-dimensional network of bicomponent fibers.

Unlike many competitors' products, the bond between the fiber and the carbon in the DuraKleen only obstructs approximately 1% of the carbon's surface area. This maximizes the exposure of the gas contaminant to the carbon. Additionally, this fiber-to-carbon bond eliminates the need for post filtration in most applications.



Carbon is uniformly distributed throughout the three dimensional network of fibers.

The DuraKleen contains 500gsm of 20x50 mesh size carbon. The blend of small 20x50 mesh size and 500gsm carbon loading gives the DuraKleen an outstanding combination of great first pass removal efficiency, filter life, and low pressure drop.

The DuraKleen is also available in other media options for the removal of specific types of amines and acid gases.

The DuraKleen can be used in several types of applications:

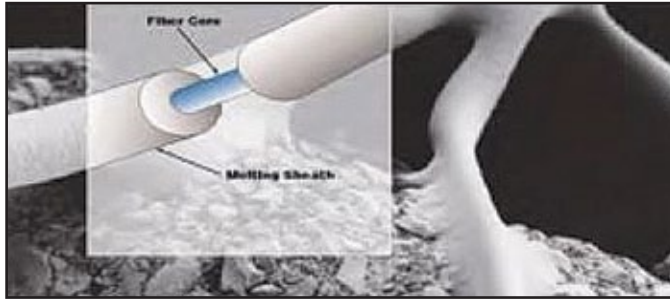
- Chemical Storage Rooms
- Laboratories
- Museums and archives
- Pharmaceutical
- Hospitals
- Airports
- Industrial Facilities
- Commercial Office Buildings
- Sports Arenas
- Casinos

Koch Filter Corporation...Durable. Reliable. Versatile.

Bulletin No. PB-1202



Koch Filter Corporation
Filtration Products Crafted with Pride



Unlike many competitor's products, the bond between the fiber and the carbon in the DuraKleen only obstructs approximately 1% of the carbon's surface area.

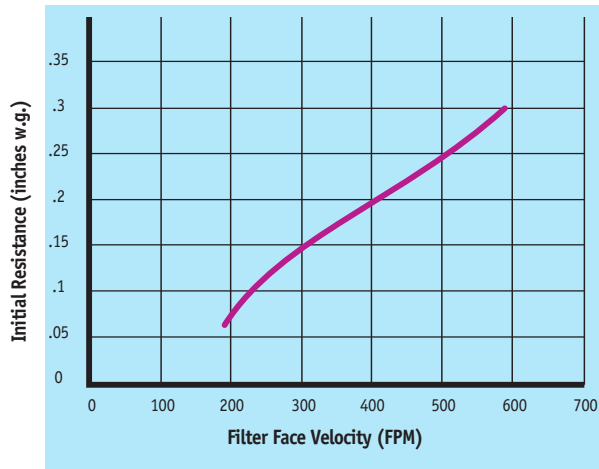


Gas contaminants must pass through tortuous pathways coming in intimate contact with the carbon.

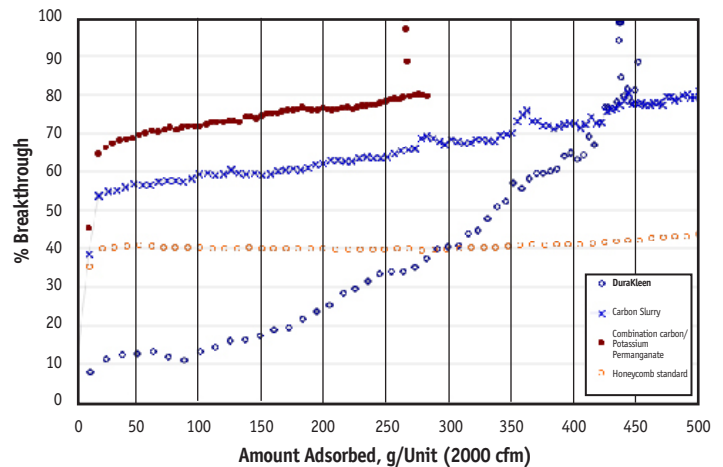
DuraKleen™ Technical Data

Nominal Size	Actual Size	Initial Resistance (in W.G.) @500FPM	Gross Media Area
24x24x12	23 ³ / ₈ x 23 ³ / ₈ x 11 ¹ / ₂	.24	55
20x24x12	19 ³ / ₈ x 23 ³ / ₈ x 11 ¹ / ₂	.24	44
12x24x12	11 ³ / ₈ x 23 ³ / ₈ x 11 ¹ / ₂	.24	24

Initial Resistance vs. Filter Face Velocity



Dynamic Breakthrough Analysis



Corporate Offices

P.O. Box 3186 • 625 West Hill Street (40208)
Louisville, KY 40201 • 502.634.4796
Fax: 502.637.2280 • E mail: info@kochfilter.com
www.kochfilter.com

Regional Sales Offices/Distribution Centers

Atlanta, GA • Detroit, MI • East Greenville, PA* • Houston, TX* • Indianapolis, IN
Kansas City, MO • Louisville, KY* • Madbury, NH • Nashville, TN • Rancho Cucamonga, CA*

*Denotes manufacturing site.

© APRIL 2011 KOCH FILTER CORPORATION

Koch Filter Corporation maintains a policy of continuous product research and improvement, and retains the right to change product specification and design without notice.



Look for the Koch Green icon! Whenever you see the Koch Green icon, we are identifying a product that meets or exceeds our criteria in one or more of the following categories: Earns LEED Points, Reduces Energy Costs, Extends Filter Lifecycles, Conserves Resources, and Improves Indoor Environmental Quality.

Distributed by