



Water Filtration Pitcher

Use and Care Manual

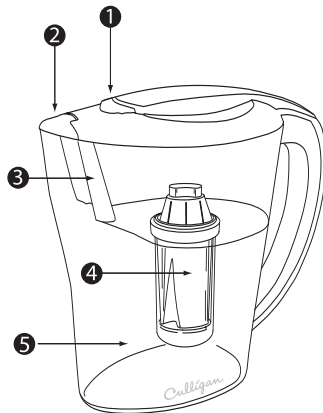
Model PIT-1

Congratulations!

You have purchased a quality Culligan® water filtration product designed to give you cleaner, more healthful, better-tasting water. For over 70 years, Culligan has been supplying better quality water to the world. Trust Culligan for the best water you can get, anytime you want it. Our goal is to provide you with the highest quality water and the best possible service. For your home. For your health. For your family.

Parts Included

1. Lid with integrated month reminder dial
2. Spout cover
3. Reservoir
4. 50-Gallon filter cartridge
5. Pitcher
6. Cartridge change reminder sticker



Precautions and Usage Guidelines

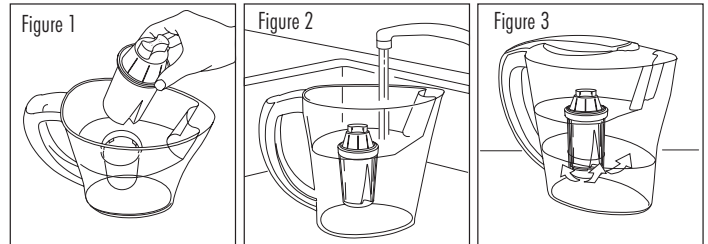
⚠ WARNING: Do not use with water that is microbiologically unsafe or of unknown quality without adequate disinfection before or after the system.

NOTE:

- The contaminants or other substances removed or reduced by this water treatment device are not necessarily in your water.
- Make certain that use complies with state and local laws and regulations.
- The replacement filter cartridge used with this system has a limited service life, which varies depending on usage and water conditions. Changes in taste or odor of the water being filtered indicate that the cartridge should be replaced.
- For cold water use only. **DO NOT FILTER HOT WATER.**
- After draining the filter pitcher, add more water right away to keep filter cartridge wet. If filter cartridge dries out, it may need to soak before being used. If filter cartridge becomes too dried out, it may need to be replaced.
- Keep pitcher filter refrigerated at all times. After 3-4 days, replace unused water with fresh water.
- All parts EXCEPT THE FILTER CARTRIDGE should be washed regularly. It is important to keep food and beverage equipment clean and sanitary.
- Pitcher, reservoir, and lid ARE NOT DISHWASHER SAFE.

Pitcher Usage

1. Unwrap filter cartridge and place in a glass of clean water. Allow cartridge to soak for 15 minutes to flush out any loose carbon fines.
2. Wash the pitcher, lid, and reservoir with soap and warm water and rinse thoroughly. **DO NOT WASH FILTER CARTRIDGE.** Pitcher, reservoir, and lid are **NOT DISHWASHER SAFE.**
3. Assemble the pitcher as shown in Figs. 1-3: place reservoir into pitcher, then push filter cartridge firmly into reservoir to create a good seal.



4. Fill the reservoir with cold tap water and set the pitcher aside. Filtered water will begin to collect in the bottom of the pitcher. Continue to add water until the filtered water in the pitcher reaches the bottom of the reservoir. If black carbon fines are present in the filtered drinking water, the filter cartridge may not have been thoroughly flushed. It may be necessary to empty the first 1-2 pitchers of filtered water to flush out any remaining carbon fines.

NOTE: DO NOT filter hot water (max. 85°F / 30°C).

5. As a reminder to replace the filter cartridge, set the filter change reminder dial (located on top of lid) to read two months from when you start using the pitcher filter. Filter cartridge should be replaced after every 50 gallons (100 pitcher fills), or approximately every 2 months.
6. **Keep pitcher filter refrigerated at all times.** After 3-4 days, replace unused water with fresh water.

Filter Cartridge Replacement

To assure pitcher performance, it is important to replace the pitcher filter cartridge regularly. Filter cartridge should be changed after 50 gallons of water have been filtered (about once every two months for an average family). Before changing the filter cartridge, wash the pitcher, reservoir, and lid with soap and warm water and rinse. **DO NOT** wash the filter cartridge. After you replace the filter cartridge, reset the calendar reminder arrow on top of the filter to read two months from the date the cartridge was replaced.

We recommend that you use **ONLY** the Culligan PR-1, PR-1U, PR-3 or PR-3U (three pack) replacement filter cartridges with your Culligan pitcher filter. Other filter cartridges will not fit securely in the reservoir and may not filter water when used with this pitcher.

Replacement Cartridges

PR-1, PR-1U, PR-3 and PR-3U replacement filter cartridges

PR-1U and PR-3U are not available for sale in the state of California.

To order, visit your local retail outlet, or call Culligan Consumer Services at 1-888-777-7962.



The PIT-1 is Tested and Certified by WQA under NSF/ANSI Standards 42 and 53. See performance data in manual for specific claims.

Performance Data

Important Notice: Read this performance data and compare the capabilities of this system with your actual water treatment needs. It is recommended that, before installing a water treatment system, you have your water supply tested to determine your actual water treatment needs.

This system has been tested according to NSF/ANSI 42 and 53 for the reduction of the substances listed below. The concentration of the indicated substances in water entering the system was reduced to a concentration less than or equal to the permissible limit for water leaving the system, as specified in NSF/ANSI 42/53.

PR-1, PR-1U*, PR-3 and PR-3U*

| Substance | Influent Challenge Concentration | Max. Permissible Product Water Concentration | Reduction Requirements | Minimum Reduction | Average Reduction |
|--------------------------------------|----------------------------------|--|------------------------|-------------------|-------------------|
| Standard 42 Aesthetic Effects | | | | | |
| Chlorine | 2.05 mg/L | 0.10 mg/L | ≥50% | 95.1% | 96.2% |
| Zinc | 9.36 mg/L | 0.05 mg/L | ≤5 mg/L | 99.4% | 99.8% |
| Particulate Class VI particles/mL | 2396 #/L | 1# mg/L | ≥85% | > 99.9% | > 99.9% |
| Standard 53 Health Effects | | | | | |
| Copper pH 6.5 | 3.24 ug/L | 0.141 ug/L | 1.3 ug/L | 95.7% | 97.8% |
| Copper pH 8.5 | 2.99 ug/L | 0.3 ug/L | 1.3 ug/L | 90.0% | 94.9% |
| Mercury pH 6.5 | 6.56 ug/L | 1.01 ug/L | 2.0 ug/L | 84.6% | 95.8% |
| Mercury pH 8.5 | 5.892 ug/L | 1.03 ug/L | 2.0 ug/L | 82.5% | 91.9% |

Capacity = 50 gallons (189.2 L) or 2 months

Rated Service Flow = 2.5 gpd

Testing was performed under standard laboratory conditions, actual performance may vary.

NOTE: The contaminants or other substances reduced or removed by this water treatment device are not necessarily in your water.

* Not for sale in California



The PIT-1 is Tested and Certified by WQA to NSF/ANSI Standard 42 for the aesthetic reduction of Chlorine Taste and Odor, Zinc, and Particulate Class VI. Standard 53, Copper, & Mercury.

Test Conditions

pH: 6.5 - 8.5 Temperature: 72 - 75°F (22 -24° C)

Operating Conditions

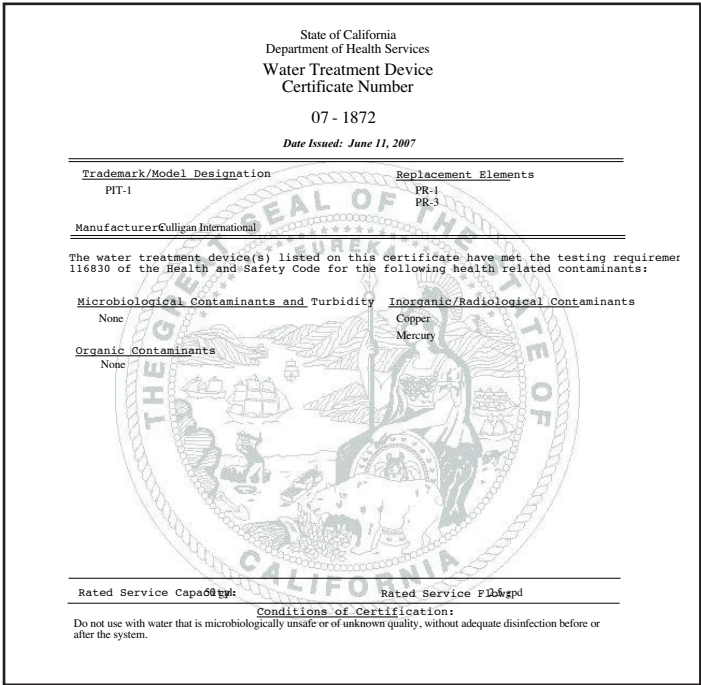
- Filter Capacity: Each filter cartridge is certified for 50 gallons (189.2L), which lasts an average family of four at least two months.
- Temperature Max: 85° F (30°C), Min. 35° (2°C).

Suggested Retail Price for Replacement Filter Cartridge

PR-1 and PR-1U (individual) \$6.99
 PR-3 and PR-3U (3 pack) \$19.99

NOTE: Prices subject to change. For current replacement cartridge pricing, contact your local retailer or Culligan Consumer Services at 1-888-777-7962

**QUESTIONS? Call Culligan Customer Service:
 1-800-721-7360, Mon. - Fri., 8:00 AM - 4:30 PM CST**



TWO YEAR LIMITED WARRANTY

Culligan warrants your Culligan® Pitcher Filter (PIT-1) for two years from the date of purchase (except replacement filter cartridges PR-1, PR-1U, PR-3 and PR-3U) against all defects in materials and workmanship, when used in compliance with the Use and Care Manual. Culligan disclaims all implied warranties, including without limitation, warranties of merchantability and fitness for particular purpose.

If for any reason the product proves to be defective within two years from the date of purchase, return it to the retailer from whom it was purchased for exchange, or if you do not receive satisfactory resolution, ship the unit and proof of purchase to the address below and the entire system will be repaired or replaced without charge or your money will be refunded. Please package your Culligan unit carefully to avoid damage in transit.

This warranty gives you specific legal rights, and you may have other legal rights which vary from state to state.

Culligan assumes no responsibility for incidental or consequential damages: for damages arising out of misuse of the product or the use of any unauthorized attachment. Some states do not allow the exclusion or limitation of implied warranties or incidental or consequential damages, so the above limitations or exclusion may not apply to you.

Should service be required during or after the warranty period, or should you have any question regarding how to use your Culligan Pitcher Water Filter System please call our Technical Support department at 1-800-721-9243, Monday through Friday, 8:00 AM to 4:30 PM Central Standard Time. Or Write: Culligan Technical Support Department, P.O. Box 1086, Sheboygan, WI 53082-1086

IOWA RESIDENTS ONLY

Store or Seller's name _____

Address _____

City _____ State _____ Zip Code _____

Telephone _____

Seller's signature _____

Customer's signature _____ Date _____



Culligan International Company
 Rosemont, Illinois 60018
 www.culligan.com

Customer Service M-F 8:00 a.m – 4:30 p.m. CST
Phone: 1-800-721-7360 Fax: 1-800-721-7390
 International: Phone (920) 457-2720 • Fax (920) 457-7366
 e-mail: customerservice@culligan.com

Sales & Marketing Correspondence
 P.O. Box 1086 • Sheboygan, WI 53082-1086
 Fax (920) 457-7366
 e-mail: sales-marketing@culligan.com